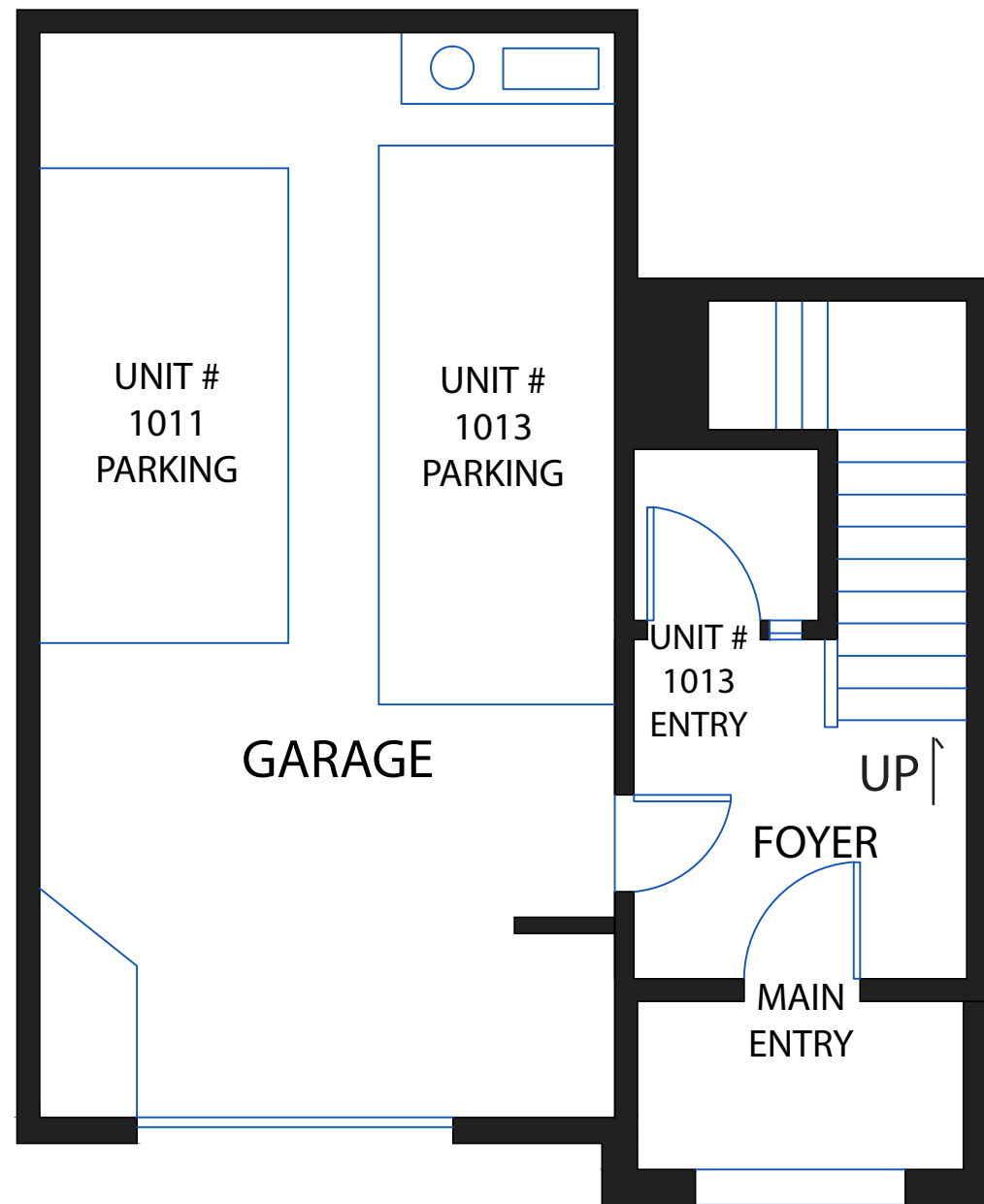
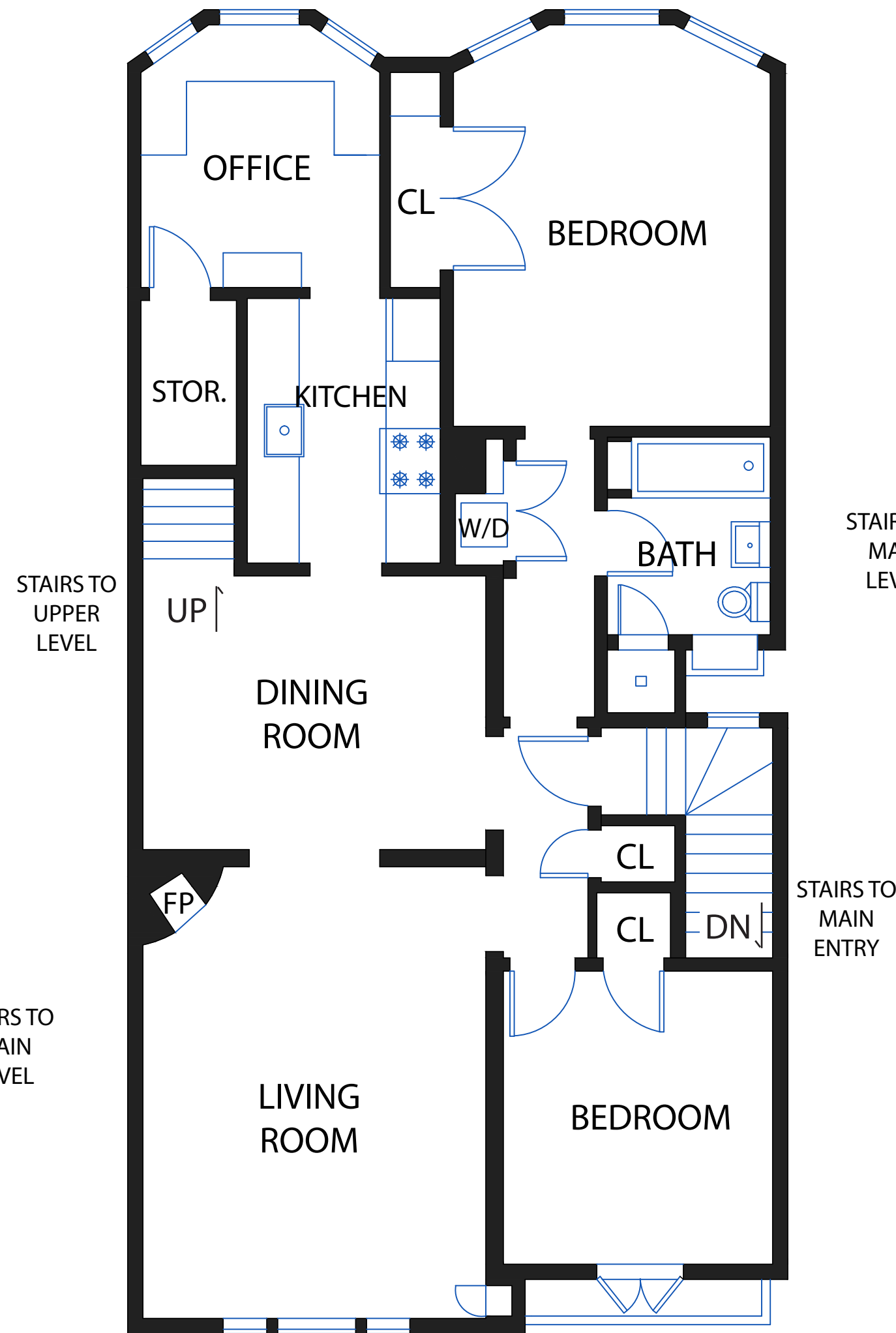


1011 CLAYTON STREET



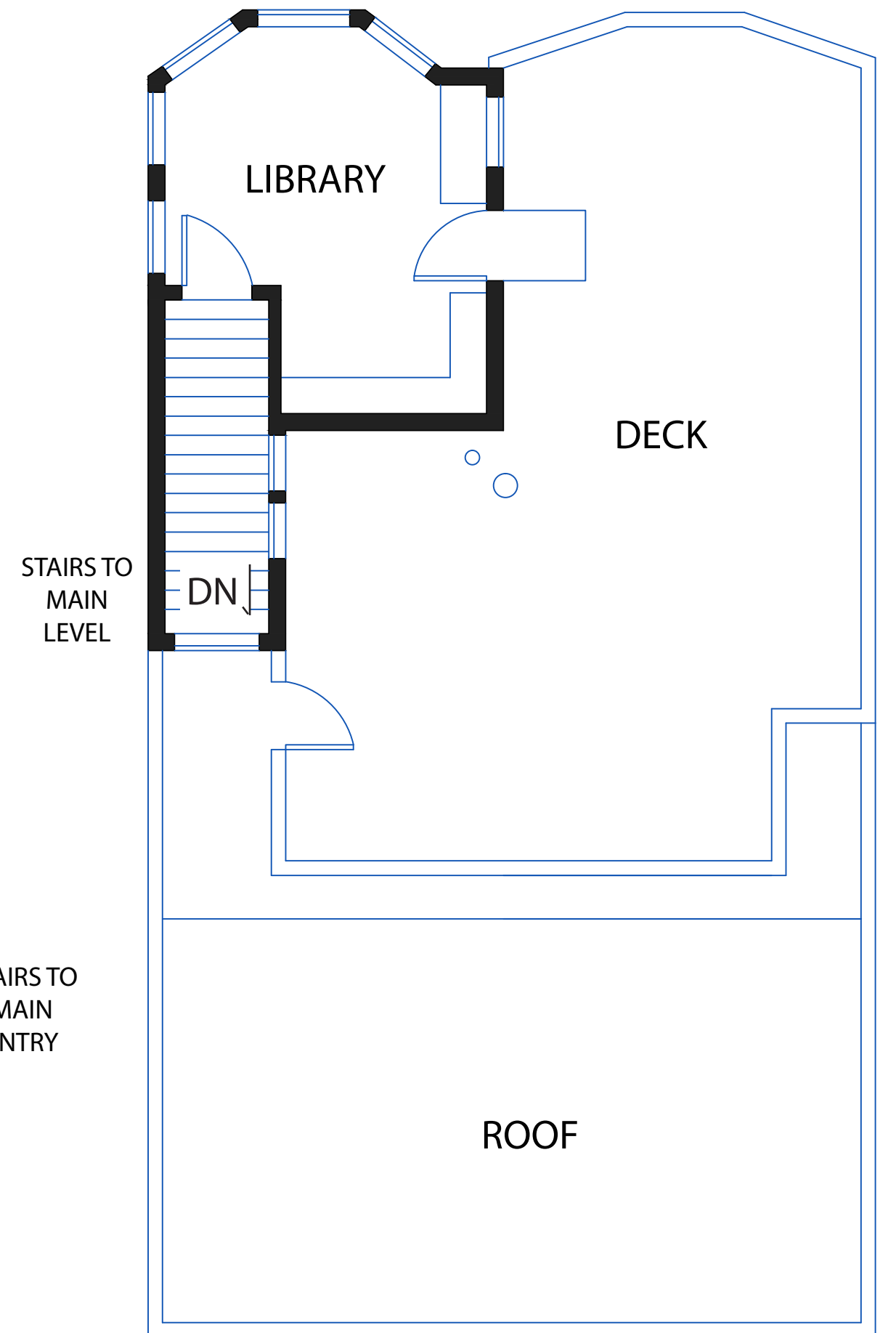
LOWER LEVEL

**GARAGE
APPROX. 415 SQF**



MAIN LEVEL

APPROX. 1200 SQF



UPPER LEVEL

**LIVING
APPROX. 155 SQF**

**DECK
APPROX. 455 SQF**

NOTE: FLOOR PLANS, SQUARE FOOTAGE, AND DIMENSIONS ARE APPROXIMATE AND NOT FOR CONSTRUCTION PURPOSES. PROSPECTIVE BUYERS SHOULD NOT RELY ON THESE PLANS, SQUARE FOOTAGE, AND DIMENSIONS IN MAKING THEIR PURCHASE DECISION AND SHOULD CAREFULLY VERIFY THE ABOVE ITEMS AND ALL OTHER INFORMATION HEREIN.